

AUTO-FOCUS VIDEO MICROSCOPE

- Ultra-high Definition
- 12V Power Output
- 0.7x~4.8x Motorized Zoom
- HDMI、LAN/USB 3.0
- Digital Four-quadrant Illumination System



Highlight Features

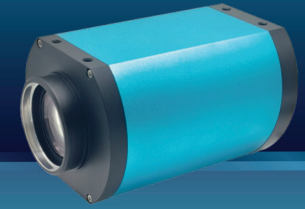
- ▶ **Motorized Optical Zoom:** 0.7X to 4.8X with 2-second transition, precise control, and recalibration-free measurement with unique algorithm.
- ▶ **Four-quadrant Illumination:** independently or collectively adjustable lighting from four directions for balanced illumination, preventing overexposure or underexposure. Reducing glare on highly reflective curved surfaces to achieve a polarized light effect.
- ▶ **Rich Accessories:** standard 1.0x objective lens included; optional 0.5x, 0.7x, 2.0x, and 3D objective lenses available; optional integrated display for limited space or aesthetic preference; optional IO trigger cables for external photo capture and focus, facilitating integration into automated systems.
- ▶ **Hotkey Operations:** scroll wheel for ZOOM in or out; right-click + scroll wheel for lighting adjustment; left-click + scroll wheel for focus adjustment.
- ▶ **Professional Calibration:** The camera will be professionally calibrated for focus and alignment before delivery to ensure all optical performance parameters are optimized.

Specifications

Model	Focus	Sensor Type	Sensor Size	Pixel Size	Shutter	Resolution	FPS	Power	Interface	Storage	Aux Lens
*A311	Auto	CMOS	1/2.8"	2.9μm	Rolling	1920x1080	60fps	DC12V	HDMI/LAN	U disk/PC	√
*A312	Auto	CMOS	1/2"	3.75μm	Rolling	1920x1080	60fps	DC12V	HDMI/LAN	U disk/PC	√
*A312U	Auto	CMOS	1/2"	3.75μm	Rolling	1920x1080	60fps	DC12V	HDMI/USB	PC	√
*A321	Fixed-Focus	CMOS	1/2.8"	2.9μm	Rolling	1920x1080	60fps	DC12V	HDMI/LAN	U disk/PC	√
*A322	Fixed-Focus	CMOS	1/2"	3.75μm	Rolling	1920x1080	60fps	DC12V	HDMI/LAN	U disk/PC	√
*A322U	Fixed-Focus	CMOS	1/2"	3.75μm	Rolling	1920x1080	60fps	DC12V	HDMI/USB	PC	√

Note: Models with symbol "*" are newly released products.

WIDE FIELD DIGITAL MICROSCOPE



Ultra-high Working Distance, Ultra-Large visual field

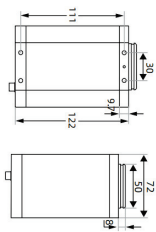
4K HDMI/LAN/USB3.0 multi-interface output

- Sony Exmor/Starvis back-illuminated CMOS sensor
- Adaptive switching in 4K/1080P HDMI 60 frame output
- Support hard trigger, mouse, foot pedal, keypad, and keyboard
- USB 3.0 video output supports up to YUV 4K at 20fps resolution
- USB flash drive for saving and previewing captured images or videos
- Embedded software for camera control, such as measurement and image comparison functions

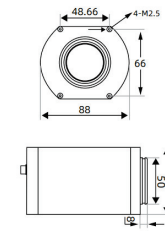
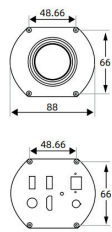
Specifications

Model	Focus	Sensor Type	Sensor Size	Pixel Size	Shutter	Max Resolution	FPS	Power	Interface	Storage	WD.	Zoom Ratio	Digital Mag.
M112	Auto	CMOS	1/2.8"	2.9 μ m	Rolling	1920x1080	HDMI:1080P@60fps LAN:1080P@60fps	DC12V	HDMI/LAN	U disk/PC	10cm \sim ∞	14	1~6
M112U	Auto	CMOS	1/2.8"	2.9 μ m	Rolling	1920x1080	HDMI:1080P@60fps USB:1080P@60fps LAN:1080P@60fps	DC12V	HDMI/LAN/USB	PC	10cm \sim ∞	14	1~6
M114	Auto	CMOS	1/2.8"	1.45 μ m	Rolling	3840x2160	HDMI:4K@30fps/1080P@60fps LAN:4K@25fps/1080P@30fps	DC12V	HDMI/LAN	U disk/PC	10cm \sim ∞	28	1~3
M202	Auto	CMOS	1/2.8"	1.45 μ m	Rolling	3840x2160	HDMI:4K@60fps LAN:4K@30fps/1080P@60fps	DC12V	HDMI/LAN	U disk /PC/RAM	10cm \sim ∞	28	1~3
M202U	Auto	CMOS	1/2.8"	1.45 μ m	Rolling	3840x2160	HDMI:4K@60fps USB:4K@20fps/1080P@60fps LAN:4K@30fps/1080P@60fps	DC12V	HDMI/LAN/USB	PC	10cm \sim ∞	28	1~3

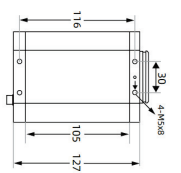
Dimensions(mm)



M112/M112U

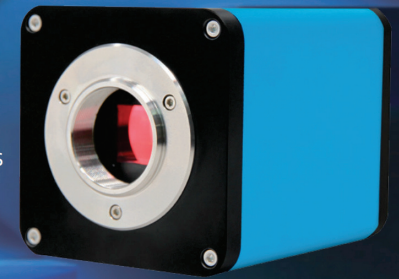


M114/M202/M202U



AUTO-FOCUS INDUSTRIAL CAMERA

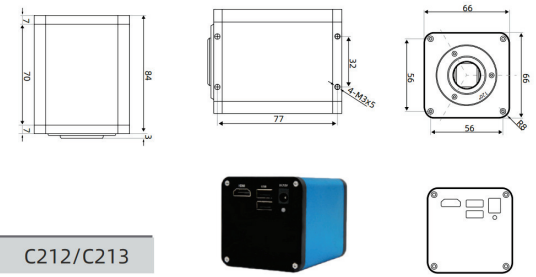
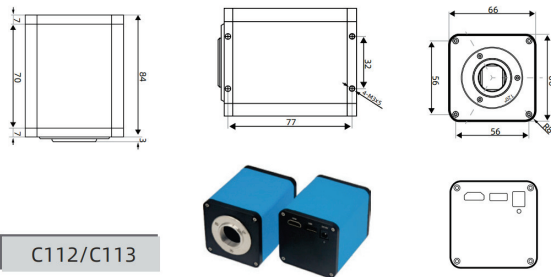
- Sony Exmor/Starvis back-illuminated CMOS sensor
- Support mouse, foot pedal, keypad, and keyboard
- Global invention patents, autofocus system with mobile image sensor
- Embedded software for camera control, including functions such as measurement and image comparison
- Powerful ISP, HDR, noise reduction, and digital zoom function
- USB flash drive for saving and previewing captured images or videos



Specifications

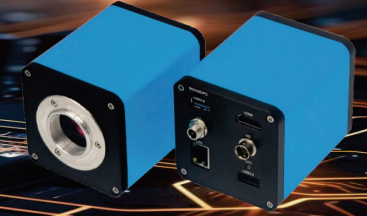
Model	Focus	Sensor Type	Sensor Size	Pixel Size	Shutter	Resolution	FPS	Lens Mount	Power	Interface	Storage
C112	Auto	CMOS	1/2.8"	2.9μm	Rolling	1920x1080	60fps	C	DC12V	HDMI	—
C113	Auto	CMOS	1/2"	3.75μm	Rolling	1920x1080	60fps	C	DC12V	HDMI	—
C212	Auto	CMOS	1/2.8"	2.9μm	Rolling	1920x1080	60fps	C	DC12V	HDMI	U disk
C213	Auto	CMOS	1/2"	3.75μm	Rolling	1920x1080	60fps	C	DC12V	HDMI	U disk

Dimensions(mm)

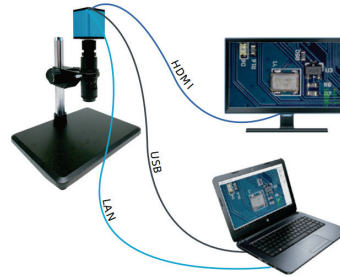


MULTI-OUTPUT AUTOFOCUS INDUSTRIAL CAMERA

- Ultra HD
- 4K HDMI/LAN/USB3.0 Multi-interface Output



- Adaptive switching in 4K/1080P HDMI 60 frame output
- Sony Exmor/Starvis back-illuminated CMOS sensor
- Global invention patents, autofocus system with mobile image sensor
- Support hard trigger, mouse, foot pedal, keypad, and keyboard

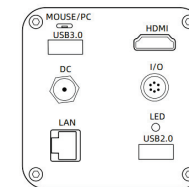
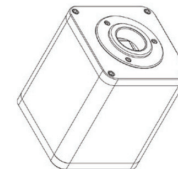
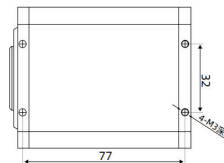
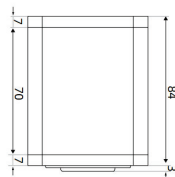
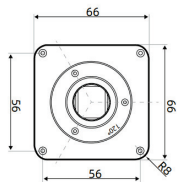


- Embedded software for camera control, including functions such as measurement and image comparison
- USB flash drive for saving and previewing captured images or videos
- Powerful ISP, HDR, noise reduction, and digital zoom function
- Support secondary development, custom logo, and provide SLView professional intelligent analysis software

Specifications

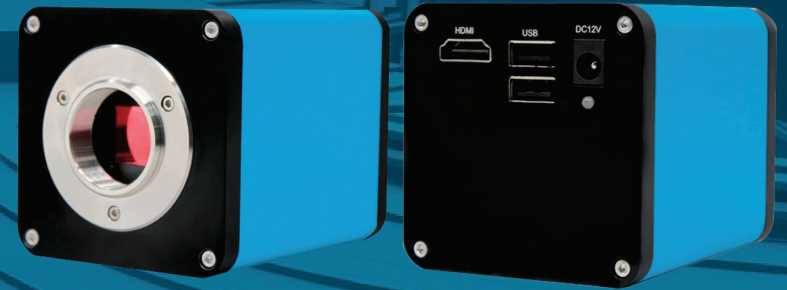
Model	Focus	Sensor Type	Sensor Size	Pixel Size	Shutter	Max Resolution	FPS	Lens Mount	Power	Interface	Storage
C312	Auto	CMOS	1/1.8"	2.4μm	Rolling	2592x1944	HDMI:1080P@60fps USB:5M@30fps/1080P@30fps LAN:5M@30fps/1080P@60fps	C	DC12V	HDMI/LAN/USB	U disk/ PC/RAM
C313	Auto	CMOS	1/1.8"	2.0μm	Rolling	3840x2160	HDMI:4K@60fps/1080P@60fps USB:4K@30fps/1080P@60fps LAN:4K@30fps/1080P@60fps	C	DC12V	HDMI/LAN/USB	U disk/ PC/RAM
C314	Auto	CMOS	1/1.7"	1.85μm	Rolling	4000x3000	HDMI:4K@60fps USB3.0:12M@20fps LAN:12M@30fps	C	DC12V	HDMI/LAN/USB	U disk/ PC/RAM

Dimensions(mm)



FIXED-FOCUS INDUSTRIAL CAMERA

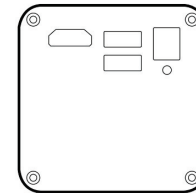
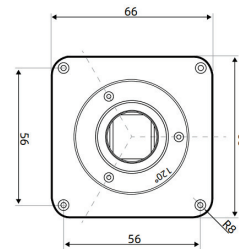
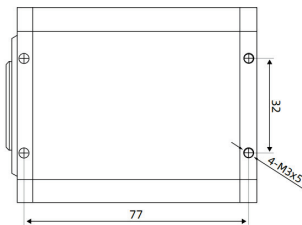
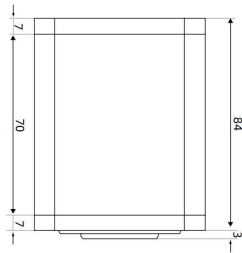
- Embedded software to control the camera
- Magnification display and image comparison functions
- USB flash drive for saving and previewing captured images or videos
- Powerful ISP, HDR, noise reduction, and digital zoom function
- Support mouse, foot pedal, keypad, and keyboard
- Sony Exmor/Starvis back-illuminated CMOS sensor
- Adaptive switching in 4K/1080P HDMI 60 frame output
- Support custom logo



Specifications

Model	Focus	Sensor Type	Sensor Size	Pixel Size	Shutter	Resolution	FPS	Lens Mount	Power	Interface	Storage
F112	Fixed-Focus	CMOS	1/2.8"	2.9 μ m	Rolling	1920x1080	60fps	C	DC12V	HDMI	U disk
F113	Fixed-Focus	CMOS	1/2"	3.75 μ m	Rolling	1920x1080	60fps	C	DC12V	HDMI	U disk

Dimensions(mm)



INDUSTRIAL MEASURING CAMERA

- Powerful ISP, HDR, noise reduction, and digital zoom function
- USB flash drive for saving and previewing captured images or videos
- Embedded software to control the camera
- Measurement, Magnification display and image comparison functions

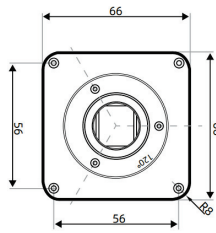
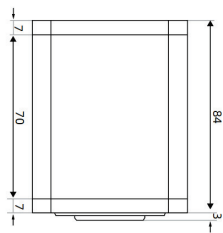
- Support custom logo
- Embedded software to control the camera
- Adaptive switching in 4K/1080P HDMI 60 frame output
- Sony Exmor/Starvis back-illuminated CMOS sensor
- Support mouse, foot pedal, keypad, and keyboard

- High-precision Measurement
- High Resolution and Clarity

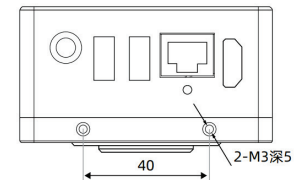
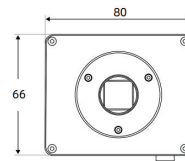
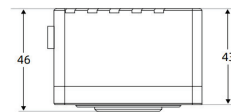
Specifications

Model	Sensor Type	Sensor Size	Pixel Size	Shutter	Max Resolution	FPS	Lens Mount	Power	Interface	Storage
L112	CMOS	1/2.8"	2.9 μ m	Rolling	1920x1080	60fps	C	DC12V	HDMI	U disk
L113	CMOS	1/2"	3.75 μ m	Rolling	1920x1080	60fps	C	DC12V	HDMI	U disk
L116	CMOS	1/1.8"	2.0 μ m	Rolling	3840x2160	HDMI:4K@60fps LAN:4K@30fps/1080P@60fps	C	DC12V	HDMI/LAN	U disk/PC /RAM

Dimensions(mm)



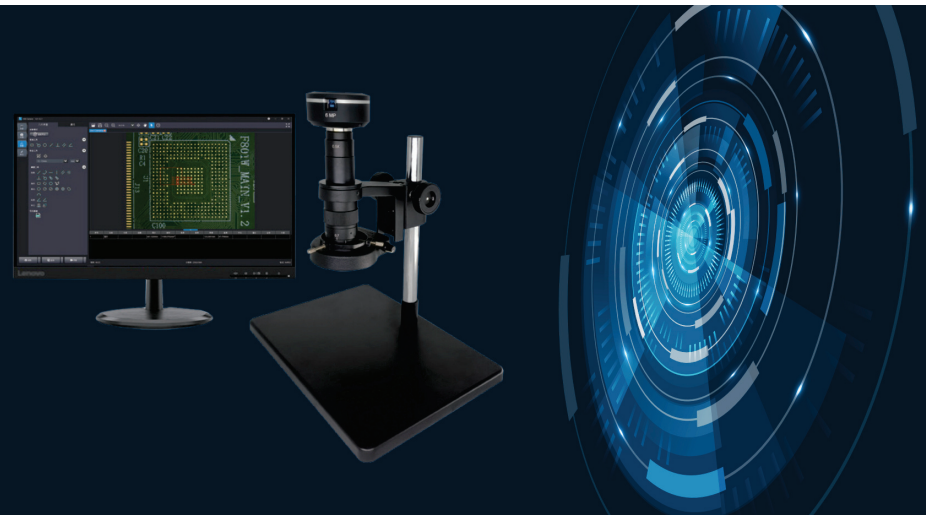
L112/L113



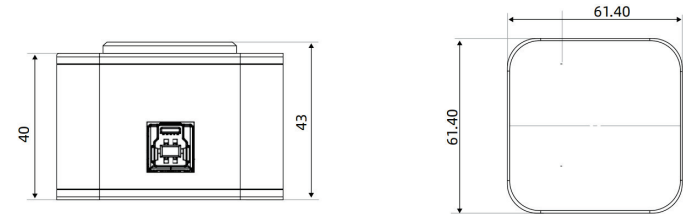
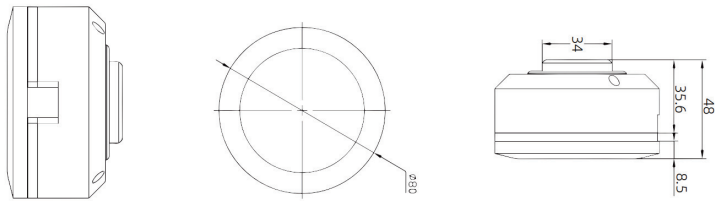
L116

USB INDUSTRIAL CAMERA

- CMOS camera with C-mount using Sony Exmor CMOS sensor
- Hardware resolution ranges from 5MP to 20MP
- USB 3.0 interface ensures high transfer rates
- Professional image processing ISP, superior image quality with industry-leading wide dynamic range, noise reduction, and digital zoom capabilities
- Advanced video and image processing software SLView is provided with the camera
- Provide standard SDK for Windows, Linux, and macOS platforms



Dimensions(mm)



U106/U108/U112/U120/U205/U208



U408



Specifications

Model	Focus	Sensor Type	Sensor Size	Pixel Size	Shutter	Max Resolution	FPS	Lens Mount	Interface	Storage
*U106	Fixed-Focus	CMOS	1/1.8"	2.4µm	Rolling	3072x2048	MJPEG: 3072*2048@30fps 2560*1944@50fps 1280*972@60fps 1920*1080@60fps NV12: 3072*2048@24fps 2560*1944@30fps 1536*1024@30fps 1280*972@60fps 1920*1080@60fps	C	TYPE-B USB3.0	PC
*U108	Fixed-Focus	CMOS	1/1.8"	2.0µm	Rolling	3840x2160	MJPEG: 3840*2160@30fps NV12: 3840*2160@17fps 1920*1080@60fps	C	TYPE-B USB3.0	PC
*U112	Fixed-Focus	CMOS	1/1.7"	1.85µm	Rolling	3968x3000	MJPEG: 3968*3000@30fps 1984*1500@30fps NV12: 3968*3000@12fps 2048*1080@60fps 1984*1500@30fps	C	TYPE-B USB3.0	PC
*U120	Fixed-Focus	CMOS	1"	2.4µm	Rolling	5440x3648	MJPEG: 5440*3648@20fps NV12: 5440*3648@7fps 2688*1824@30fps 1792*1216@60fps	C	TYPE-B USB3.0	PC
*U205	Fixed-Focus	CMOS	2/3"	3.45µm	Global	2432x2048	MJPEG: 2432*2048@35fps NV12: 2432*2048@30fps 1216*1024@70fps	C	TYPE-B USB3.0	PC
*U208	Fixed-Focus	CMOS	1/1.2"	2.9µm	Rolling	3840x2160	MJPEG: 3840*2160@30fps NV12: 3840*2160@17fps 1920*1080@60fps	C	TYPE-B USB3.0	PC
*U408	Fixed-Focus	CMOS	1/3"	1.45µm	Rolling	3840x2160	MJPEG: 3840*2160@30fps 3072*1728@40fps 1920*1080@60fps NV12: 3840*2160@6.5fps 3072*1728@10fps 1920*1080@30fps	C	TYPE-B USB3.0	PC

Note: Models with symbol "*" are newly released products.

Accessories



USB Foot Pedal

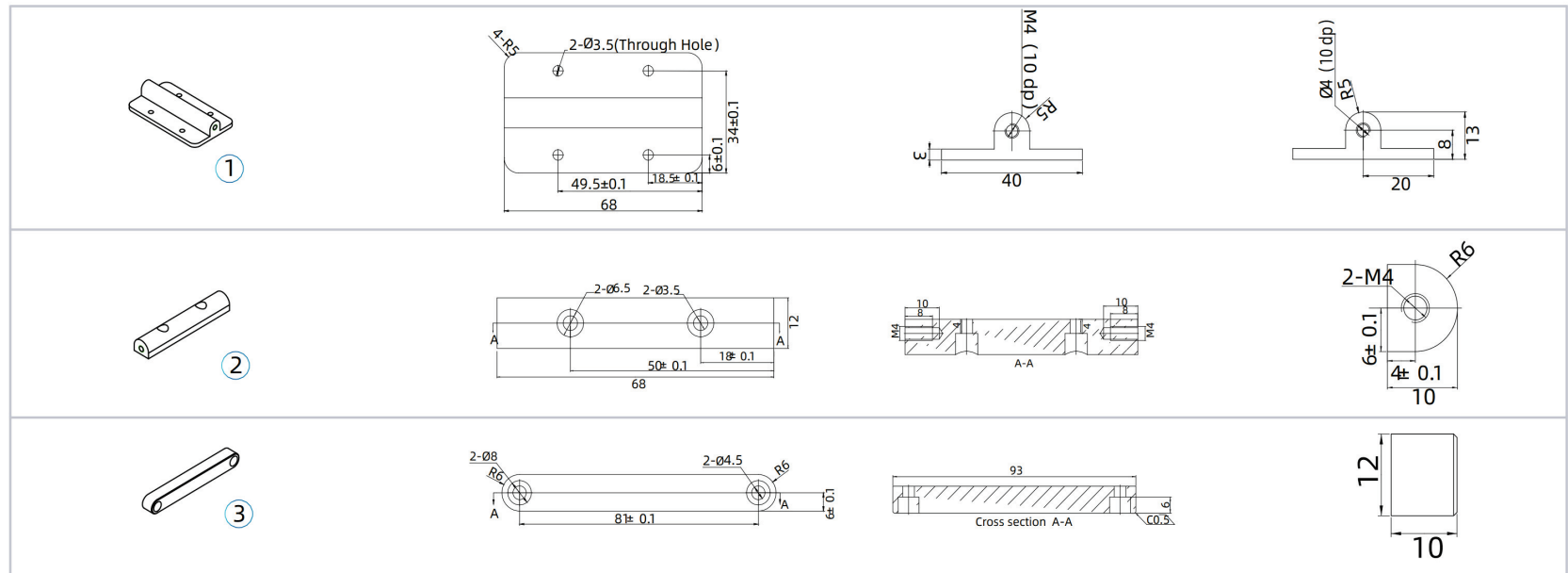
- 1 Easy and quick installation: simply plug it into the camera's USB port to use.
- 2 Convenient to use: just step lightly on the foot pedal to operate.
- 3 The function can be set to "one-click focus" or "one-click photo capture," pre-configured before dispatched based on customer requirements.



2-key/4-key USB Mini Keyboard

- 1 Easy and quick installation: simply plug it into the camera's USB port to use.
 - 2 Convenient to use: press the key to perform the respective function.
 - 3 The M11X/M202 series cameras support any 2/4 of the following functions:
Zoom In, Zoom Out, Focus In, Focus Out,
One-click Focus, Focus Mode Switch, Auto White Balance,
Video Recording, Photo Capture
- The C series cameras support any 2/4 of the following functions:
MF + , MF - , Auto focus,
One-click Photo Capture, One-click Focus

Camera Mounting Bracket



*This page only displays partial accessories.